

POSITIVE CHANGE COMMUNITY LIBRARY

LOCATION

The library is located about 5 km from the city at Thom Allan Village, Traditional Authority Mwambo, Zomba District in Malawi (the warm heart of Africa)

HOW TO GET THERE

The community is based in Zomba (former capital city). The best mode of transport from the airport to the community is by bus.

The Chileka International Airport is less than 180 km from the community. Take a bus from the city of Blantyre to Zomba (the buses have normally a sign with the directions). Estimated costs for the bus ride are under 25 \$ (the dollar information is only for planning purposes; the payment is usually done in the local currency).

The Kamuzu International Airport is based in Lilongwe (the capital of Malawi), which is almost 320 km away from the community. Take a public minibus taxi at the airport to get to the main bus station in Lilongwe (less than 5 \$). From there, board a bus/minibus to Zomba (almost 45 \$).

The volunteer(s) can also be welcomed at the airport.

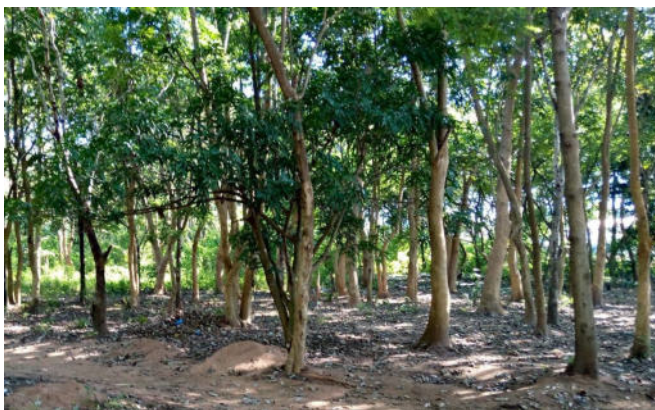
VOLUNTEERING

Up to two volunteers can be accommodated.
Duration? Three months at most (one month minimum stay)

Since the library has just started, the volunteer(s) will be asked to teach the community on how to manage a library.

FOOD

Depends on the volunteer's choice. If the volunteer chooses to live with a family, he/she will just need to contribute a little amount per day (k3000, which is roughly \$3). This option is usually cheaper, as the volunteer(s) only need to add up some few groceries to the owner of the house.



If the volunteer chooses to live alone, he/she has to provide food for him-/herself. The actual costs will depend on the food and the organization of a volunteer to cook for him/her.

Anything else? Normally, markets are not far. The staple food is Nsima/Ugali. What about beer lovers and smoker? Local and international beers as well as cigarettes are also common. Within the community local beer is brewed in few selected points and commonly spirits.



ACCOMMODATION

The accommodation can be arranged upon the wishes of the volunteer(s). If they wish to be accommodated within the community, a single room will be provided to them. If they wish to enjoy the typical life of Malawi, they can also share a room.

If they prefer to stay in their own house, a reasonable house for rent can be searched for (estimated costs for a house with electricity are about k150,000 and are usually pre-paid, whereby most tap waters are post-paid individually). Those houses are normally well fenced and self-contained. This option might be preferably for those, who seek for more privacy.

POSITIVE CHANGE COMMUNITY LIBRARY

It is recommended to stay in the house of the people who are in the project of Bookfeeding, since it will cost less and the volunteers will experience the true life of Malawi. But it is totally up to the wishes of the volunteer(s).

COSTS

The costs depend on what kind of activity is happening during the week (\$3-5\$).

COMMUNITY

Thom Allan Village is one of the oldest villages in the Zomba District and has a river (called Mulunguzi River), that flows throughout the year. Most people depend on seasonal agriculture, commonly crops (maize). The area is ideal for agriculture.

Within a radius of 4 km is a public hospital. The market, post office, banks and other major facilities are within a distance of 5 km. Most people like to walk when they are going to markets and other places, whilst others hire a motorbike, taxi or peddle bicycle at a cheaper cost.

From a distance of almost 16 km there is a mountain view of the Zomba Mountain. This mountain is a water source. But the community uses tap water for drinking and has a big dam at the top of Zomba Mountain. The mountain is also an ideal place for hiking as it has its own special attracting tourist sites. About 25 km away from the village is a lake without an outlet and 160 km away is a freshwater lake.

The people within the community are non-racist, respect the views of others and are tolerant to each other. Most members are Christians followed by Muslims. The commonest languages are Chichewa and English. Average people are able to speak and write English. In any case the people are most welcoming, willing to learn new cultures and ready to share some malawian culture with the volunteer(s). So don't get surprised when people are smiling at you ;-)



ANYTHING ELSE?

The local currency name is Malawi kwacha (MK). The exchange rate per euro differs, but the (current) average ratio is 1 EUR equals 1300 MK. Exchange money bureau can be found at the airport or at the land border.

The volunteer(s) should be medically equipped (i.e ant malaria, first aid box).

CONTACT

Peter Kamanga
Call: +265 9840 5120 0
WhatsApp: +265 8843 9478 9

Trintas Mkaliainga
Call: +265 9942 8370 3
WhatsApp: +265 8812 1616 1
Email: tmkaliainga@gmail.com

SOCIAL MEDIA

<https://www.facebook.com/profile.php?id=100079599755735>